



NEW



**Helical inline
Bevel helical
Parallel shaft helical**

rossi.com



A smarter way to drive

iFIT, the **i**nnovative, **i**nternational, **i**nterchangeable gearmotors designed for a world in motion. Equipped with compact IE3 premium efficiency electric motors (IEC or NEMA), available with **i**IoT based smart **i**nverter. A compact design solution, fully **i**nterchangeable with a superior quality to **F**it all **i**ndustrial applications **i**mproving companies' productivity. **i**Fit gearmotor is directly **i**ntegrated with your machine and, unlike most driving solutions with comparable

integrations, is fitting it with a real-time replacement without engineering costs. A wide range of design options to **F**it a smarter way to move your machines, more reliable than expected. Manufactured in our ISO-certified factories, the **iFIT** is the result of Rossi proven expertise in designing, reliable working processes and new state-of-the-art technologies.

Features

Benefits

| | | |
|---|---|---|
| Fully interchangeable with market standards | → | "Plug & Play" with no re-engineering costs |
| Made in Europe | → | Superior quality, minimum maintenance |
| Full range with robust cast iron housing | → | High performance and reliability: minimum deformation, no gearing misalignment, no vibration, and low noise level |
| Gear precision as per DIN/ISO 6 or better | → | Energy saving, low noise level, reduced backlash |
| New IE2, IE3 compact electric motors | → | Premium efficiency |
| High quality sealing solutions | → | Long lifetime, no oil leakage |
| Round shaped, smooth housing surface | → | Wash down capability |
| Higher torque | → | Up to 12% higher than competition |

Additional benefits



- High Customer Value
- Short Lead Times for standard products
- 3 Years Guarantee
(as per our Guarantee terms)

Helical inline, Bevel helical & Parallel shaft helical

- Several mounting positions (B3, B6, ...)
- Constant and reduced backlash
- Torque up to 12% higher than competition
- Exactly same ratios as market standard
- Dedicated solutions for high radial loads
- Hardened and ground motor shaft lip seal raceway
- Metric or inch shafts

| Product family | <i>ic</i> | <i>io</i> | <i>ip</i> |
|-----------------------------|----------------|----------------|----------------|
| Size range | 27... ÷ 97... | 373 ÷ 973 | 27... ÷ 97... |
| M_{N2} | 145 ÷ 3 350 | 224 ÷ 4 870 | 145 ÷ 4 870 |
| Fr_2 | 4 230 ÷ 19 800 | 5 640 ÷ 40 000 | 4 500 ÷ 29 900 |
| i | 3,4 ÷ 290 | 5,4 ÷ 197 | 3,8 ÷ 282 |
| $P_{1\text{mot}}$ (4 poles) | 3 ÷ 30 | 3 ÷ 30 | 3 ÷ 30 |



Several output flange dimensions as market standard



OIL SEALING AND PLUGS

- Gearboxes supplied with oil
- Advanced synthetic oil PAG (polyalkylene glycol) - Long oil life, maintenance and energy saving
- Oil drain and breather plugs
- Breather plugs with protection strip ready to use
- Oil level plugs



CERTIFICATIONS

- Products complying with ATEX
- Adapters complying with ATEX



PROTECTION/PAINTING

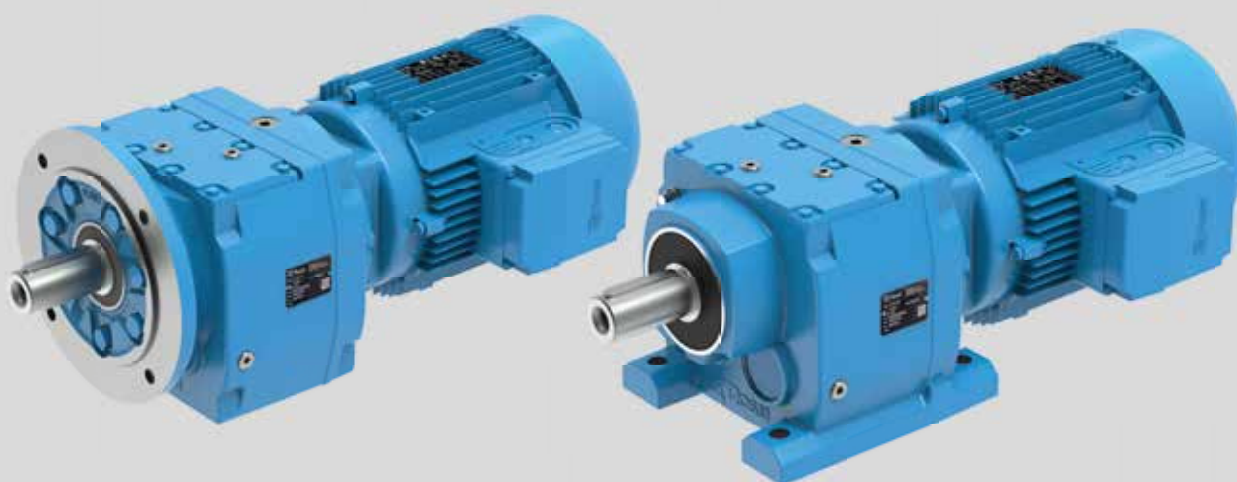
- RAL 5010 C3 paint as standard (hard and smooth clinging painting)
- IP 55 as standard



OPTIONS

- Universal mounting positions supplied with oil
- Strengthened low speed shaft
- Food grade oil
- IP 66 for motors
- Special paints suitable for aggressive environments on request
- Condition monitoring (coming soon)

Helical inline



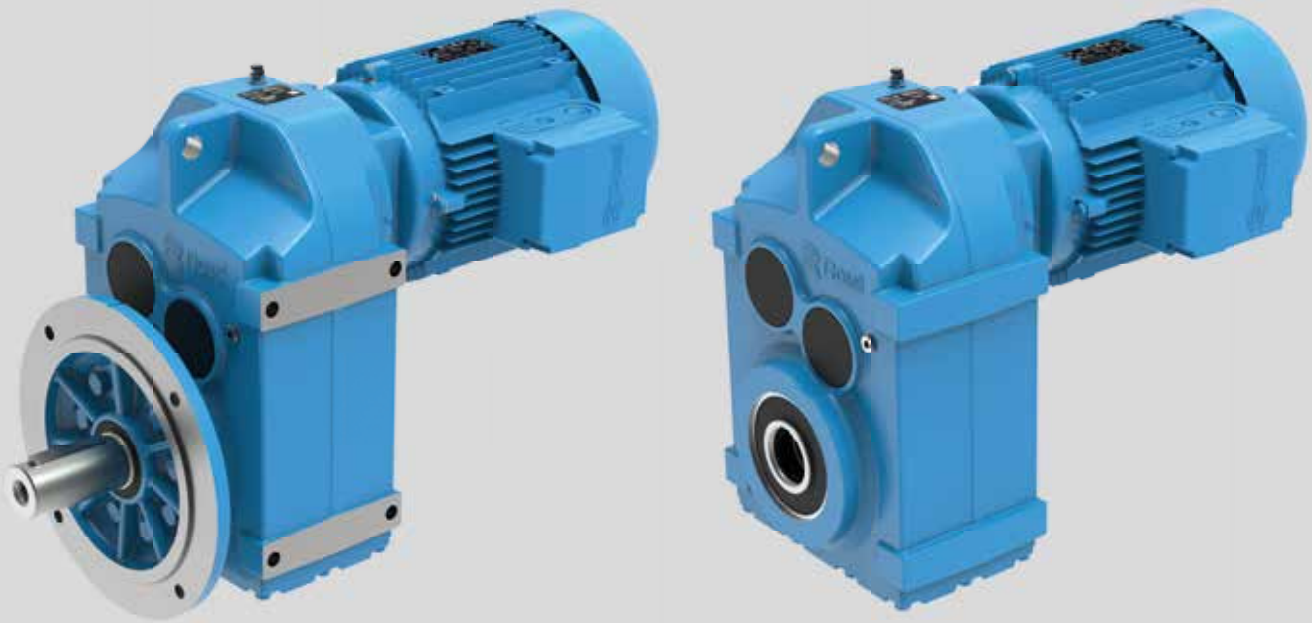
| Frame size | M_{N2} [N m] | F_{r2} [N] | Ratio i | Max applicable power (4 poles) [kW] |
|------------|-------------------|-----------------|--------------|---|
| iC 272 | 140 | 4 230 | 3,4 ÷ 135 | 3 |
| iC 273 | 145 | | | |
| iC 372 | 205 | 4 940 | 3,4 ÷ 135 | 3 |
| iC 373 | 224 | | | |
| iC 472 | 335 | 5 420 | 3,8 ÷ 177 | 5,5 |
| iC 473 | 335 | | | |
| iC 572 | 470 | 7 100 | 4,4 ÷ 187 | 7,5 |
| iC 573 | 500 | | | |
| iC 672 | 655 | 6 980 | 4,3 ÷ 200 | 7,5 |
| iC 673 | 670 | | | |
| iC 772 | 830 | 9 900 | 5,3 ÷ 195 | 11 |
| iC 773 | 925 | | | |
| iC 872 | 1 690 | 16 900 | 5,3 ÷ 247 | 22 |
| iC 873 | 1 750 | | | |
| iC 972 | 2 930 | 19 800 | 4,5 ÷ 290 | 30 |
| iC 973 | 3 350 | | | |

Bevel helical



| Frame size | M_{N2} [N m] | F_{r2} [N] | Ratio i | Max applicable power (4 poles) [kW] |
|------------|-------------------|-----------------|--------------|---|
| iO 373 | 224 | 5 640 | 5,4 ÷ 106 | 3 |
| iO 473 | 450 | 5 920 | 5,8 ÷ 132 | 3 |
| iO 573 | 670 | 7 630 | 6,6 ÷ 145 | 4 |
| iO 673 | 925 | 12 300 | 7,3 ÷ 145 | 5,5 |
| iO 773 | 1 750 | 16 100 | 7,2 ÷ 192 | 11 |
| iO 873 | 3 000 | 27 300 | 7,2 ÷ 197 | 22 |
| iO 973 | 4 870 | 40 000 | 8,7 ÷ 176 | 30 |

Parallel shaft helical



| Frame size | M_{N2} [N m] | F_{r2} [N] | Ratio i | Max applicable power (4 poles) [kW] |
|------------|-------------------|-----------------|--------------|---|
| iP 272 | 145 | 4500 | 4,2 ÷ 141 | 1,5 |
| iP 273 | 145 | | | |
| iP 372 | 224 | 4290 | 3,7 ÷ 128 | 3 |
| iP 373 | 224 | | | |
| iP 472 | 450 | 5920 | 4,9 ÷ 191 | 3 |
| iP 473 | 450 | | | |
| iP 572 | 615 | 9200 | 5,2 ÷ 200 | 5,5 |
| iP 573 | 650 | | | |
| iP 672 | 825 | 10300 | 3,9 ÷ 228 | 5,5 |
| iP 673 | 900 | | | |
| iP 772 | 1700 | 15700 | 4,3 ÷ 282 | 11 |
| iP 773 | 1700 | | | |
| iP 872 | 3350 | 19800 | 4,1 ÷ 271 | 22 |
| iP 873 | 3350 | | | |
| iP 972 | 4620 | 29900 | 4,6 ÷ 277 | 30 |
| iP 973 | 4870 | | | |

iFit
Gearmotors

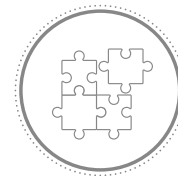
+

dDrive
by Rossi




Electric motors

- Standard and brake motors
- IE3 class of the international efficiency standard (IEC 60034-30) $\geq 0,75$ kW
- IE2 class of the international efficiency standard (IEC 60034-30) $\leq 0,55$ kW
- Multivoltage, 2, 4 and 6 poles
- Aluminium frames
- Cable entry possible from two sides
- Motor insulation class F, rise temperature B



OPTIONALS

- Motor insulation class H
- Thermistor type thermal probes PTC
- Bi-metal type thermal probes
- Motor with connectors
- Anti-condensation heater
- Forced fan cooling (IC 416)
- Drip proof cover
- Double shaft extension
- Incremental encoder sin/cos
- Optional painting
- Optional protection grades IP 56 ... 66
-  US motors certified to UL
- EISA Premium Efficiency (IE3)
- INMETRO ABNT NBR-17094-1 (IR3)



COMPLIANCE

- Test reports
- Machinery Directive 2006/42/EC
- Directive 2011/65/EC RoHS
- Directive «ErP» 2009/125/EC



PROTECTION/PAINTING

- RAL 5010 C3 paint as standard (hard and smooth clinging painting)
- IP 55



INVERTER (on demand) **dDrive**

- Maximum overload: up to 200%
- Best sensor-less ability to handle overload on the market
- Flexibility in motor-mounted or wall-mounted installation
- Full "Plug & Play"
- Autotuning and Software programming and updating included
- In compliance with IE2 class ECODESIGN EN 50598 IEC/EN 60034-30-1 and Ecodesign Directive in accordance with IEC 61800-9-2
- Remote commissioning, monitoring and diagnostics, Bluetooth, App and Safety (STO)
- Communication and connection among several inverters
- A wide range of Field buses
- Comprehensive options range, components and design concept guarantee the best reliability and vibration resistance. Dust-tight and protected against water jets (IP 65)

Inverter



Monitoring app

Solutions for an evolving industry

In the global marketplace, our customers, investors, partners value our products and services for two reasons: excellence and reliability. At Rossi we utilize change as a strategic lever for our growth. “Solutions for an evolving industry” fully expresses

our corporate philosophy: We are a flexible and dynamic reality, able to satisfy all requirements of a continuously evolving industrial world, thanks to our innovative solutions.

- Cutting-edge manufacturing
- Specialized housing machining
- Extensive systematic controls
- Experience and know-how
- Excellence and innovation
- Reliable customer support.



We have a solution for every segment



Key figures



over **1,000** people around the world



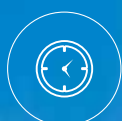
17 affiliated companies



5,000 customers worldwide



5 production facilities



over **70** years of experience



8 assembly plants



50 million euros investments in new technologies and methodologies to improve manufacturing efficiency

After-sale service



Highly trained mechanics and support teams can ensure a fast and efficient after-sale service providing support worldwide.

Digital support



Rossi Drawings, Selector and Download area enable real-time access to your order tracking, invoices, spare part tables download and contact to our service. Fast and easy online access is available 24/7, in 5 languages.

Visit us at
www.rossi.com

Quality

3 years warranty*



Our drive is to innovate and boost operations by manufacturing performing, precise, reliable and high-quality products all over the world. We are always one step forward in offering and developing solutions that can satisfy an unlimited number of application needs, even in the most demanding conditions.

* As per our warranty terms.

System certifications

ISO
9001:2015

ISO
14001:2015

ISO
45001:2018

Product certifications





Rossi

Solutions for
an evolving
industry

Rossi S.p.A.
Via Emilia Ovest 915/A
41123 Modena - Italy

info@rossi.com
www.rossi.com

© Rossi S.p.A. Rossi reserves the right to make any modification whenever to this publication contents.
The information given in this document only contains general descriptions and/or performance features
which may not always specifically reflect those described.

2643.BRO.IFIT-.24.04-0-EN

